



RDC 205-206

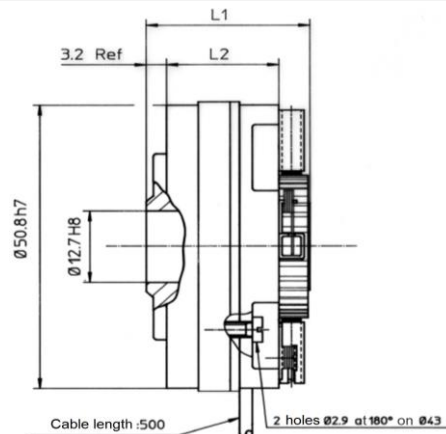
Direct Current Tachometer generator



- Applications :**
- Industrial applications
 - Machine tools
 - Robots

- Description :**
- Dc tachometer generator : rotor/stator set
 - Permanent magnet excitation
 - Rotor mounted on mooth shaft
 - Small size
 - Collector on opposite of mounting side
 - **COPPER COMMUTATOR**

DIAGRAM



Type	L1	L2
RDC 205	25,8	17,5
RDC 206	33	24

MAIN CHARACTERISTICS

RDC 205-206

Direct Current Tachometer generator

DESIGNATION	SYMB	UNIT	VALUES	
			RDC 205	RDC 206
Max. speed (mechanical)	n_m	tr/min	8000	6000
Moment of inertia	J	km cm ²	0,08	0,12
No load driving torque	M_r	N.cm	≤ 0,3	≤ 0,3
Maximum E.M.F	E_m	V	100	100
Maximum linearity error	AE	% E _T	≤ 0,15	≤ 0,15
Overall ripple rate (peak to peak)	ΔE_c	% E _c	≤ 0,5	≤ 0,5
Rotation harmonics (f=2 p.n)	ΔE_p	% E _c	≤ 0,05	≤ 0,05
Slot harmonics (f=Z.n)	ΔE_z	% E _c	≤ 0,45	≤ 0,45
Calibration precision	ΔE_o	%/E _{T0}	± 2	± 2
E.M.F. tempetaure drift - not compensated - compensated	ΔE_e	% °C	0,03 -	0,03 -
Time constant	C_t	ms	0,2	0,4
Filter : Time constant of filter		ms	0,1	0,1
Load current		mA	2	2
Speed		rpm	3000	3000

CONSTRUCTION DETAILS

Number of poles 2p	4	4
Number of armature slots	33	33
Number of commutator blades	33	33
Insultation class	B (IEC34-1)	B (IEC34-1)
Operating temperature	0°C +80°C	-20°C +80°C
Climatic protection	C _a (IEC68-1)	C _a (IEC68-1)
Protection degree	IP 00 (IEC34-5)	IP 00 (IEC34-5)
Direction of rotation	reversible	
Excitation : Aimants permanents	Alnico	

Weight	0,17 kg	0,25 kg
---------------	----------------	----------------

RDC 205-206

Direct Current Tachometer generator

MECHANICAL OPTIONS

ARMATURE BORE Ø d (mm)			MOTOR CENTERING END FRAME Ø D (mm)		ARMATURE CLAMPING DEVICE
Standard	Max.	Min.	Standard		
12,7 ^{H7}	12,7	6	50,8		Smooth – Mounted by pressing

OPTIONS

- No adaptation possible

AVAILABLES OPTIONS

- No adaptation possible



Markings and polarity of terminals (cables) for counter-clockwise rotation viewing the mounting face

A1 (red) : +
A2 (blue) : -

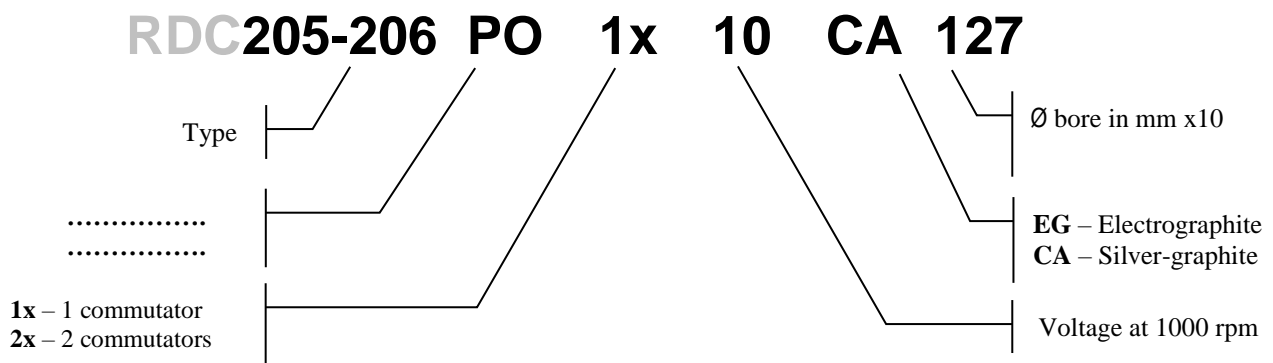
ELECTRICAL OPTIONS

DESCRIPTION	SYMB	UNIT	VALUES							
			Min.	2	3	7	10	10	14	Max.
E.M.F. at 1000 rpm	E _n	V	RDC 205 RDC 206	2	3	7	10	10	14	20
Voltage gradient	C _v	V/rpm	RDC 205 RDC 206	0,002	0,003	0,007	0,01	0,01	0,014	0,02
Armature resistance	R _a	Ω	RDC 205 RDC 206	5	11	62	112	34	77	140
Max termal load	I _{th}	mA	RDC 205 RDC 206	164	118	48	37	76	48	37
Max. allowed speed	n _a	rpm	RDC 205 RDC 206	8000	8000	8000	8000	6000	6000	5000

BRUSHES

GRADE	CODE	APPLICATION LIMITS	DIMENSIONS	NUMBER
EG - Electrographite	/0002607	Special applications, on request	3,5 x 3 x 10 mm	4
CA - Silver-graphite	/0001397	STANDARD for normal use at E.M.F < 100 v		

PRODUCT DESCRIPTION



When inquiring, please advise the serial number of the tachogenerator to be replaced.

RADIO-ENERGIE

Route de Nonnes-86100 CHATELLERAULT – FRANCE – Tel : +33 5 49 21 76 22 – Fax : +33 5 49 93 26 79

www.radio-energie.eu

Société par Actions Simplifiée au capital de 300 000 Euros immatriculée au RCS de Poitiers sous n° 829 195 668

TVA intracommunautaire : FR94829195668

Code APE 2711Z